



# AGRI PIPING SYSTEM

**POLY INDIA** Pressure Pipes (Agri Pipes) are manufactured using world class uPVC material, which is achieved by plasticizing PVC material, to get more strength and stiffness. The material used for producing these pipes has the ability to stabilize the UV radiation and also has high resistance to corrosion, which makes it ideal for use in agricultural or any outdoor operations.

IS:4985



2021



POLY INDIA offers an extensive range of agriculture PVC- pressure pipes and fittings. These pipes and fittings are designed specifically for varied pressure and gravity flow applications in agriculture, irrigation, swimming pool applications, and domestic applications including potable water supply.

POLY INDIA Agri pipes are manufactured in accordance with IS 4985, covering range from 20 mm to 315 mm in pressure ratings of 2.5, 4, 6 & 10 Kg/cm<sup>2</sup>. The moulded fittings are manufactured. The pipes are provided with plain socket and suitable for solvent cement jointing. They are available in light grey colour and nominal length of 6 metres.



**Lead Free**



**Non-Toxic & Hygienic**



**Cost Effective**



**Easy to Install**



**Maintenance Free**



**Strong & Durable**



**UV Resistant**



**Excellent Chemical Resistance**



**Corrosion Resistance**



**Non Conductive**



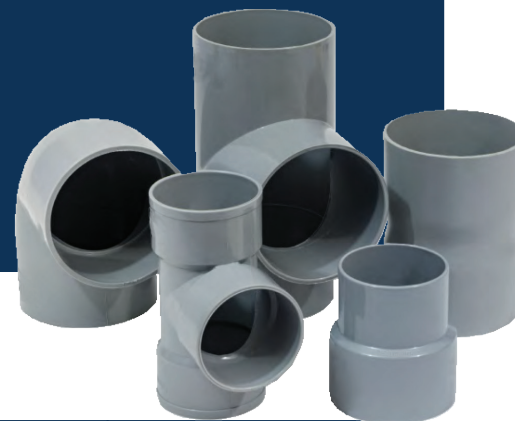
**Fire Resistance**



**Smooth Surface**



**Longer Life**



<b>Sewage</b>	<b>Drainage</b>	<b>Water supply to Farmlands</b>	<b>Industrial</b>
<b>Portable Water Supply</b>		<b>Rain Water Harvesting</b>	<b>Bore-Well</b>

# Dimensions for Agri Pipes

Nominal Outside Diameter (Nominal Size)	Mean Outside Diameter		Wall Thickness												Mean Socket Internal Diameter of Mid Point of Socket Length	
			Class 1 0.25 MPa 2.5 Kg/cm <sup>2</sup>		Class 2 0.40 MPa 4.0 Kg/cm <sup>2</sup>		Class 3 0.60 MPa 6.0 Kg/cm <sup>2</sup>		Class 4 0.80 MPa 8.0 Kg/cm <sup>2</sup>		Class 5 1.00 MPa 10.0 Kg/cm <sup>2</sup>		Class 6 1.25 MPa 12.5 Kg/cm <sup>2</sup>			
	Min	Max	Min	Max	Min	Max	Min	Max	Min	Max	Min	Max	Min	Max	Min	Max
(mm)	(mm)	(mm)	(mm)	(mm)	(mm)	(mm)	(mm)	(mm)	(mm)	(mm)	(mm)	(mm)	(mm)	(mm)	(mm)	(mm)
20	20.0	20.3	-	-	-	-	-	-	-	-	1.1	1.5	1.4	1.8	20.1	20.3
25	25.0	25.0	-	-	-	-	-	-	1.2	1.6	1.4	1.8	1.7	2.1	25.1	25.3
32	32.0	32.3	-	-	-	-	-	-	1.5	1.9	1.8	2.2	2.2	2.7	32.1	32.3
40	40.0	40.3	-	-	-	-	1.4	1.8	1.8	2.2	2.2	2.7	2.8	3.3	40.1	40.3
50	50.0	50.3	-	-	-	-	1.7	2.1	2.3	2.8	2.8	3.3	3.4	4.0	50.1	50.3
63	63.0	63.3	-	-	1.5	1.9	2.2	2.7	2.8	3.3	3.5	4.1	4.3	5.0	63.1	63.3
75	75.0	75.3	-	-	1.8	2.2	2.6	3.1	3.4	4.0	4.2	4.9	5.1	5.9	75.1	75.3
90	90.0	90.3	1.3	1.7	2.1	2.6	3.1	3.7	4.0	4.6	5.0	5.7	6.1	7.1	90.1	90.3
110	110.0	110.4	1.6	2.0	2.5	3.0	3.7	4.3	4.9	5.6	6.1	7.1	7.5	8.7	110.1	110.4
125	125.0	125.4	1.8	2.2	2.9	3.4	4.3	5.0	5.6	6.4	6.9	8.0	8.5	9.8	125.1	125.4
140	140.0	140.5	2.0	2.4	3.2	3.8	4.8	5.5	6.3	7.3	7.7	8.9	9.5	11.0	140.2	140.5
160	160.0	160.5	2.3	2.8	3.7	4.3	5.4	6.2	7.2	8.3	8.8	10.2	10.9	12.6	160.2	160.5
180	180.0	180.6	2.6	3.1	4.2	4.9	6.1	7.1	8.0	9.2	9.9	11.4	12.2	14.1	180.2	180.5
200	200.0	200.6	2.9	3.4	4.6	5.3	6.8	7.9	8.9	10.3	11.0	12.7	13.6	15.7	200.3	200.6
225	225.0	225.7	3.3	3.9	5.2	6.0	7.6	8.8	10.0	11.5	12.4	14.3	15.3	17.6	225.3	225.7
250	250.0	250.8	3.6	4.2	5.7	6.5	8.5	9.8	11.2	12.9	13.8	15.9	17.0	19.6	250.4	250.8
280	280.0	280.9	4.1	4.8	6.4	7.4	9.5	11.0	12.5	14.4	15.4	17.8	19.0	21.9	280.4	280.9
315	315.0	316.0	4.6	5.3	7.2	8.3	10.7	12.4	14.0	16.1	17.3	19.9	21.4	24.7	315.4	316.0
355	355.0	356.1	5.1	5.9	8.1	9.4	12.0	13.8	15.8	18.2	19.6	22.6	24.1	27.8	355.4	356.0
400	400.0	401.2	5.8	6.7	9.1	10.5	13.5	15.6	17.8	20.5	22.0	25.3	27.2	31.3	400.4	401.0

Note: Pipes available with ISI Mark except 355 and 400mm